

**SURPLUS
SALE!**



1-800-334-9720

**Discontinued Products
Limited Quantities
All Sales Final!**

Item #	DESCRIPTION	Qty On Hand	1 to 99	100 +	Spec Sheet
98601396	15 UTILITY 01L 60#&BAR/KPA	2	\$1.58	\$0.99	986.pdf
98601397	15 UTILITY 01L 100#&BAR/KPA	1	\$1.58	\$0.99	986.pdf
98601398	15 UTILITY 01L 160#&BAR/KPA	1,326	\$1.58	\$0.99	986.pdf
98601399	15 UTILITY 01L 200#&BAR/KPA	7	\$1.58	\$0.99	986.pdf
98601400	15 UTILITY 01L 300#&BAR/KPA	2	\$1.58	\$0.99	986.pdf
98601410	15 UTILITY 01B 15#&BAR/KPA	22	\$1.58	\$0.99	986.pdf
98601411	15 UTILITY 01B 30#&BAR/KPA	1	\$1.58	\$0.99	986.pdf
98601416	15 UTILITY 01B 300#&BAR/KPA	503	\$1.58	\$0.99	986.pdf
98601419	20 UTILITY 01L 30/OIMV&BAR/KPA	133	\$1.58	\$0.99	986.pdf
98601426	20 UTILITY 01L 15#&BAR/KPA	4	\$1.58	\$0.99	986.pdf
98601427	20 UTILITY 01L 30#&BAR/KPA	1	\$1.58	\$0.99	986.pdf
98601428	20 UTILITY 01L 60#&BAR/KPA	7	\$1.58	\$0.99	986.pdf
98601430	20 UTILITY 01L 160#&BAR/KPA	1	\$1.58	\$0.99	986.pdf
98601431	20 UTILITY 01L 200#&BAR/KPA	836	\$1.58	\$0.99	986.pdf
98601436	20 UTILITY 02L VAC/15#	205	\$1.58	\$0.99	986.pdf
98601437	20 UTILITY 02L VAC/30# **	164	\$1.58	\$0.99	986.pdf
98601438	20 UTILITY 02L VAC/60# **	10	\$1.58	\$0.99	986.pdf
98601439	20 UTILITY 02L VAC/100#	129	\$1.58	\$0.99	986.pdf
98601440	20 UTILITY 02L VAC/160# **	192	\$1.58	\$0.99	986.pdf
98601444	20 UTILITY 02L 60#&BAR/KPA	1	\$1.58	\$0.99	986.pdf
98601446	20 UTILITY 02L 160#&BAR/KPA	1	\$1.58	\$0.99	986.pdf
98601447	20 UTILITY 02L 200#&BAR/KPA	70	\$1.58	\$0.99	986.pdf
98601449	20 UTILITY 02L 400#&BAR/KPA	6	\$1.58	\$0.99	986.pdf
98601450	20 UTILITY 02L 600#&BAR/KPA	3	\$1.58	\$0.99	986.pdf
98601453	20 UTILITY 01B VAC/30#	97	\$1.58	\$0.99	986.pdf
98601454	20 UTILITY 01B VAC/60# **	195	\$1.58	\$0.99	986.pdf
98601455	20 UTILITY 01B VAC/100#	165	\$1.58	\$0.99	986.pdf
98601456	20 UTILITY 01B VAC/160#	102	\$1.58	\$0.99	986.pdf
98601458	20 UTILITY 01B 15#&BAR/KPA	20	\$1.58	\$0.99	986.pdf
98601460	20 UTILITY 01B 60#&BAR/KPA	46	\$1.58	\$0.99	986.pdf
98601461	20 UTILITY 01B 100#&BAR/KPA	1	\$1.58	\$0.99	986.pdf
98601462	20 UTILITY 01B 160#&BAR/KPA	1	\$1.58	\$0.99	986.pdf
98601463	20 UTILITY 01B 200#&BAR/KPA	2	\$1.58	\$0.99	986.pdf

600 S Grace Street • PO Box 4364 • Rocky Mount NC 27803

Local: 252-977-1131 • Fax: 252-977-2192

www.dascosales.com • info@dascosales.com

**SURPLUS
SALE!**



1-800-334-9720

Discontinued Products Limited Quantities All Sales Final!

Item #	DESCRIPTION	Qty On Hand	1 to 99	100 +	Spec Sheet
98601464	20 UTILITY 01B 300#&BAR/KPA	2,131	\$1.58	\$0.99	986.pdf
98601467	20 UTILITY 02B 30/OIMV&BAR/KPA	1	\$1.58	\$0.99	986.pdf
98601469	20 UTILITY 02B VAC/30# **	109	\$1.58	\$0.99	986.pdf
98601470	20 UTILITY 02B VAC/60# **	98	\$1.58	\$0.99	986.pdf
98601471	20 UTILITY 02B VAC/100# **	17	\$1.58	\$0.99	986.pdf
98601472	20 UTILITY 02B VAC/160# **	66	\$1.58	\$0.99	986.pdf
98601474	20 UTILITY 02B 15#&BAR/KPA	76	\$1.58	\$0.99	986.pdf
98601476	20 UTILITY 02B 60#&BAR/KPA	1,616	\$1.58	\$0.99	986.pdf
98601477	20 UTILITY 02B 100#&BAR/KPA	61	\$1.58	\$0.99	986.pdf
98601480	20 UTILITY 02B 300#&BAR/KPA	413	\$1.58	\$0.99	986.pdf
98601500	25 UTILITY 02L VAC/15# **	250	\$2.21	\$0.99	986.pdf
98601502	25 UTILITY 02L VAC/60# **	187	\$2.21	\$0.99	986.pdf
98601503	25 UTILITY 02L VAC/100# **	233	\$2.21	\$0.99	986.pdf
98601504	25 UTILITY 02L VAC/160#	367	\$2.21	\$0.99	986.pdf
98601505	25 UTILITY 02L VAC/300#	38	\$2.21	\$0.99	986.pdf
98601509	25 UTILITY 02L 100#&BAR/KPA	1	\$2.21	\$0.99	986.pdf
98601510	25 UTILITY 02L 160#&BAR/KPA	1	\$2.21	\$0.99	986.pdf
98601513	25 UTILITY 02L 400#&BAR/KPA	74	\$2.21	\$0.99	986.pdf
98601514	25 UTILITY 02L 600#&BAR/KPA	1	\$2.21	\$0.99	986.pdf
98601531	25 UTILITY 02B 30/OIMV&BAR/KPA	3	\$2.21	\$0.99	986.pdf
98601534	25 UTILITY 02B VAC/60# **	93	\$2.21	\$0.99	986.pdf
98601535	25 UTILITY 02B VAC/100# **	49	\$2.21	\$0.99	986.pdf
98601536	25 UTILITY 02B VAC/160# **	36	\$2.21	\$0.99	986.pdf
98601538	25 UTILITY 02B 15#&BAR/KPA	281	\$2.21	\$0.99	986.pdf
98601539	25 UTILITY 02B 30#&BAR/KPA	161	\$2.21	\$0.99	986.pdf
98601540	25 UTILITY 02B 60#&BAR/KPA	76	\$2.21	\$0.99	986.pdf
98601542	25 UTILITY 02B 160#&BAR/KPA	2	\$2.21	\$0.99	986.pdf
98601544	25 UTILITY 02B 300#&BAR/KPA	1	\$2.21	\$0.99	986.pdf
98601545	25 UTILITY 02B 400#&BAR/KPA	62	\$2.21	\$0.99	986.pdf
98601546	25 UTILITY 02B 600#&BAR/KPA	19	\$2.21	\$0.99	986.pdf
98601564	35 UTILITY 02L 30/OIMV&BAR/KPA	173	\$3.16	\$0.99	986.pdf
98601565	35 UTILITY 02L VAC/15# **	7	\$3.16	\$0.99	986.pdf

600 S Grace Street • PO Box 4364 • Rocky Mount NC 27803

Local: 252-977-1131 • Fax: 252-977-2192

www.dascosales.com • info@dascosales.com

**SURPLUS
SALE!**



1-800-334-9720

Discontinued Products Limited Quantities All Sales Final!

Item #	DESCRIPTION	Qty On Hand	1 to 99	100 +	Spec Sheet
98601566	35 UTILITY 02L VAC/30#	134	\$3.16	\$0.99	986.pdf
98601567	35 UTILITY 02L VAC/60# **	150	\$3.16	\$0.99	986.pdf
98601568	35 UTILITY 02L VAC/100# **	65	\$3.16	\$0.99	986.pdf
98601569	35 UTILITY 02L VAC/160#	910	\$3.16	\$0.99	986.pdf
98601570	35 UTILITY 02L VAC/300#	212	\$3.16	\$0.99	986.pdf
98601571	35 UTILITY 02L 15#&BAR/KPA	2	\$3.16	\$0.99	986.pdf
98601572	35 UTILITY 02L 30#&BAR/KPA	1	\$3.16	\$0.99	986.pdf
98601574	35 UTILITY 02L 100#&BAR/KPA	8	\$3.16	\$0.99	986.pdf
98601575	35 UTILITY 02L 160#&BAR/KPA	1,094	\$3.16	\$0.99	986.pdf
98601577	35 UTILITY 02L 300#&BAR/KPA	632	\$3.16	\$0.99	986.pdf
98601578	35 UTILITY 02L 400#&BAR/KPA	4	\$3.16	\$0.99	986.pdf
98601582	35 UTILITY 02L 1500#	285	\$3.16	\$0.99	986.pdf
98601613	45 UTILITY 02L 30/OIMV&BAR/KPA	242	\$4.74	\$0.99	986.pdf
98601614	45 UTILITY 02L VAC/15#	43	\$4.74	\$0.99	986.pdf
98601615	45 UTILITY 02L VAC/30#	130	\$4.74	\$0.99	986.pdf
98601616	45 UTILITY 02L VAC/60#	60	\$4.74	\$0.99	986.pdf
98601617	45 UTILITY 02L VAC/100# **	520	\$4.74	\$0.99	986.pdf
98601618	45 UTILITY 02L VAC/160# **	3	\$4.74	\$0.99	986.pdf
98601619	45 UTILITY 02L VAC/300# **	39	\$4.74	\$0.99	986.pdf
98601621	45 UTILITY 02L 30#&BAR/KPA	19	\$4.74	\$0.99	986.pdf
98601622	45 UTILITY 02L 60#&BAR/KPA	9	\$4.74	\$0.99	986.pdf
98601623	45 UTILITY 02L 100#&BAR/KPA	13	\$4.74	\$0.99	986.pdf
98601624	45 UTILITY 02L 160#&BAR/KPA	1	\$4.74	\$0.99	986.pdf
98601626	45 UTILITY 02L 300#&BAR/KPA	0	\$4.74	\$0.99	986.pdf
98601627	45 UTILITY 02L 400#&BAR/KPA	128	\$4.74	\$0.99	986.pdf
98601628	45 UTILITY 02L 600#&BAR/KPA	168	\$4.74	\$0.99	986.pdf
98603090	25 UTILITY 02L 1,000#&BAR/KPA	339	\$2.21	\$0.99	986.pdf
98603091	25 UTILITY 02L 2,000#&BAR/KPA	456	\$2.21	\$0.99	986.pdf
98603092	25 UTILITY 02L 3,000#&BAR/KPA	180	\$2.21	\$0.99	986.pdf
98603093	25 UTILITY 02L 5,000#&BAR/KPA	0	\$2.21	\$0.99	986.pdf
98603094	25 UTILITY 02L 1,500#&BAR/KPA	2	\$2.21	\$0.99	986.pdf
98603095	25 UTILITY 02L 4,000#&BAR/KPA	25	\$2.21	\$0.99	986.pdf
98850000	45 2000S 02L 30"HG	6	\$19.75	\$10.00	988.pdf

600 S Grace Street • PO Box 4364 • Rocky Mount NC 27803

Local: 252-977-1131 • Fax: 252-977-2192

www.dascosales.com • info@dascosales.com

**SURPLUS
SALE!**



1-800-334-9720

**Discontinued Products
Limited Quantities
All Sales Final!**

Item #	DESCRIPTION	Qty On Hand	1 to 99	100 +	Spec Sheet
98850001	45 2000S 02L 30"HG/0/15 PSI	4	\$19.75	\$10.00	988.pdf
98850002	45 2000S 02L 30"HG/0/30 PSI	1	\$19.75	\$10.00	988.pdf
98850003	45 2000S 02L 30"HG/0/60 PSI	2	\$19.75	\$10.00	988.pdf
98850004	45 2000S 02L 30"HG/0/100 PSI	2	\$19.75	\$10.00	988.pdf
98850006	45 2000S 02L 30"HG/0/300 PSI	4	\$19.75	\$10.00	988.pdf
98850007	45 2000S 02L 15 PSI	17	\$19.75	\$10.00	988.pdf
98850008	45 2000S 02L 30 PSI	60	\$19.75	\$10.00	988.pdf
98850009	45 2000S 02L 60 PSI	12	\$19.75	\$10.00	988.pdf
98850010	45 2000S 02L 100 PSI	4	\$19.75	\$10.00	988.pdf
98850011	45 2000S 02L 160 PSI	23	\$19.75	\$10.00	988.pdf
98850012	45 2000S 02L 200 PSI	42	\$19.75	\$10.00	988.pdf
98850014	45 2000S 02L 400 PSI	2	\$19.75	\$10.00	988.pdf
98850015	45 2000S 02L 600 PSI	1	\$19.75	\$10.00	988.pdf
98850017	45 2000S 02L 1000 PSI	8	\$22.12	\$10.00	988.pdf
98850018	45 2000S 02L 1500 PSI	1	\$22.12	\$10.00	988.pdf
98850021	45 2000S 02L 5000 PSI	7	\$22.12	\$10.00	988.pdf
98850023	45 2000S 02L 10000 PSI	2	\$22.12	\$10.00	988.pdf
98850100	45 2000S 04L 30"HG	2	\$19.75	\$10.00	988.pdf
98850101	45 2000S 04L 30"HG/0/15 PSI	5	\$19.75	\$10.00	988.pdf
98850102	45 2000S 04L 30"HG/0/30 PSI	4	\$19.75	\$10.00	988.pdf
98850103	45 2000S 04L 30"HG/0/60 PSI	1	\$19.75	\$10.00	988.pdf
98850104	45 2000S 04L 30"HG/0/100 PSI	3	\$19.75	\$10.00	988.pdf
98850105	45 2000S 04L 30"HG/0/150 PSI	5	\$19.75	\$10.00	988.pdf
98850106	45 2000S 04L 30"HG/0/300 PSI	5	\$19.75	\$10.00	988.pdf
98850107	45 2000S 04L 15 PSI	9	\$19.75	\$10.00	988.pdf
98850108	45 2000S 04L 30 PSI	31	\$19.75	\$10.00	988.pdf
98850109	45 2000S 04L 60 PSI	26	\$19.75	\$10.00	988.pdf
98850111	45 2000S 04L 160 PSI	16	\$19.75	\$10.00	988.pdf
98850112	45 2000S 04L 200 PSI	27	\$19.75	\$10.00	988.pdf
98850114	45 2000S 04L 400 PSI	10	\$19.75	\$10.00	988.pdf
98850115	45 2000S 04L 600 PSI	9	\$19.75	\$10.00	988.pdf
98850118	45 2000S 04L 1500 PSI	2	\$22.12	\$10.00	988.pdf
98850119	45 2000S 04L 2000 PSI	12	\$22.12	\$10.00	988.pdf

600 S Grace Street • PO Box 4364 • Rocky Mount NC 27803

Local: 252-977-1131 • Fax: 252-977-2192

www.dascosales.com • info@dascosales.com

**SURPLUS
SALE!**



1-800-334-9720

**Discontinued Products
Limited Quantities
All Sales Final!**

Item #	DESCRIPTION	Qty On Hand	1 to 99	100 +	Spec Sheet
98850120	45 2000S 04L 3000 PSI	40	\$22.12	\$10.00	988.pdf
98850121	45 2000S 04L 5000 PSI	5	\$22.12	\$10.00	988.pdf
98850123	45 2000S 04L 10000 PSI	1	\$22.12	\$10.00	988.pdf
99200100	20 PL4P 02L 60#	0	\$1.67	\$0.99	
99200200	20 PL4P 02L 100#	2,604	\$1.67	\$0.99	
99201442	20 DL4P 02L 15#	3,412	\$1.84	\$0.99	
99201444	20 DL4P 02L 60#	0	\$1.84	\$0.99	
99201445	20 DL4P 02L 100#	0	\$1.84	\$0.99	
99201448	20 DL4P 02L 300#	137	\$1.84	\$0.99	
99201474	20 DB4P 02B 15#	1,224	\$1.99	\$0.99	
99201475	20 DB4P 02B 30#	248	\$1.99	\$0.99	
99201476	20 DB4P 02B 60#	2,400	\$1.99	\$0.99	
99201478	20 DB4P 02B 160#	0	\$1.99	\$0.99	
99201480	20 DB4P 02B 300#	667	\$1.99	\$0.99	
99201508	25DL4P 1/4"L 60#	0	\$2.00	\$0.99	
99201509	25DL4P 100#	346	\$2.00	\$0.99	
99201510	25DL4P 160#	228	\$2.00	\$0.99	
99201511	25DL4P 200#	142	\$2.00	\$0.99	
99201572	35DL4P 30#	306	\$4.00	\$0.99	
99201573	35DL4P 60#	100	\$4.00	\$0.99	
99201574	35DL4P 100#	496	\$4.00	\$0.99	
99201576	35DL4P 200#	192	\$4.00	\$0.99	
99220010	25 63N7L4P AMMONIA 02L 60#	172	\$8.50	\$0.99	992Am.pdf
99220020	25 63N7L4P AMMONIA 02L 160#	589	\$8.50	\$0.99	992Am.pdf
99220040	25 63N7L4C AMMON 02L VAC/150/F	254	\$9.50	\$0.99	992Am.pdf
99220050	25 63N7L4C AMMON 02L VAC/300/F	145	\$9.50	\$0.99	992Am.pdf

600 S Grace Street • PO Box 4364 • Rocky Mount NC 27803
Local: 252-977-1131 • Fax: 252-977-2192
www.dascosales.com • info@dascosales.com



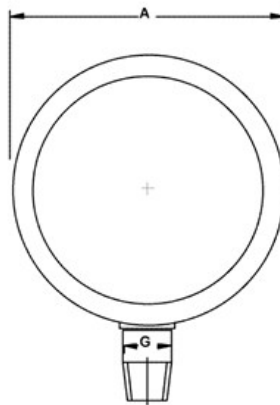
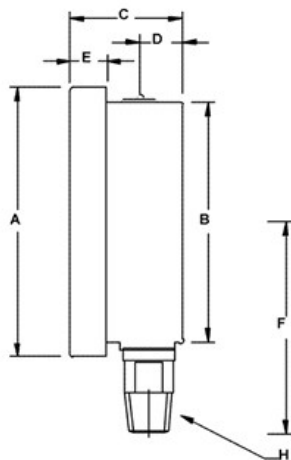
Daughtridge Sales Company, Inc.

Series 988 Type 2000S(L) All Stainless Steel Specifications

Size: 4 1/2"
Case: 304 Stainless Steel
Window: Safety Glass
Dial: Aluminum, black markings on white background
Pointer: Black aluminum, micrometer
Bourdon Tube: C-Shaped 316 Stainless (Vacuum - 600 psi and compound)
 Helical 316 Stainless (1000 psi - 10,000 psi)
Movement: 400 Series Stainless Steel
Socket: 316 Stainless Steel
Connection: 1/4" or 1/2" NPT Lower Only
Accuracy: ASME B40.1 Grade 1A ±1%
Options: Liquid Fillable (Glycerine or Silicone)
Ranges: Vacuum thru 10,000 psi & Compound



2000S		V	V	V	V	V	V	V	1	3	6	1	1	2	3	4	6	1	1	2	3	5	1	
		A	A	A	A	A	A	A	5	0	0	0	6	0	0	0	0	0	0	5	0	0	0	0
4 1/2"	1/4" NPT LM	X	X	X	X	X	X	X	X	X	X	X	X	X	X	X	X	X	X	X	X	X	X	X
	1/2" NPT LM	X	X	X	X	X	X	X	X	X	X	X	X	X	X	X	X	X	X	X	X	X	X	X



Dimensions	
A	5 1/32"
B	4 17/32"
C	2 3/64"
D	51/64"
E	11/16"
F	3 31/32"
G	3/4"
H	1/2" or 1/4" NPT

How To Order

Dial Size 45 = 4 1/2"
Series 988
Conn 02 = 1/4"
 04 = 1/2"
Conn L = Lower
Options GF = Glycerine Fill
 SF = Silicone Fill
Type P = Pressure
 V = Vacuum
 C = Compound
Specify Range

EXAMPLE: 45-988-04L-P60 = 4 1/2" Series 988 1/2" Lower 60 psi

Daughtridge Sales Company, Inc.

501 S Pine Street • PO Box 4364 • Rocky Mount NC 27803

Toll Free: 800-334-9720 • Fax: (252) 977-2192

(252) 977-1131 • www.dascosales.com



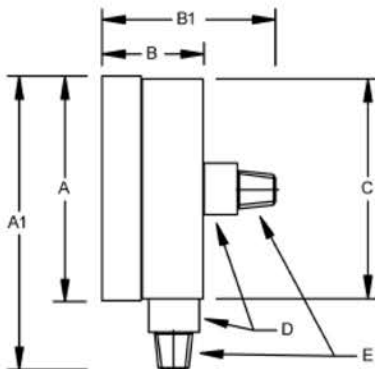
986 SERIES UTILITY GAUGE Specifications

- Sizes:** 1 1/2", 2", 2 1/2", 3 1/2", 4 1/2"
- Case & Ring:** Black Steel
- Window:** Acrylic
- Dial:** White with black & blue scales
- Pointer:** Black aluminum
- Mounting Connection:** 1/8" NPT Back & Lower
1/4" NPT Back & Lower
- Tube:** Circular Copper Alloy up to 600 psi
Helical Copper Alloy 1000 to 5000 psi
- Socket:** Brass
- Movement:** Brass
- Ranges:** 1 1/2" - Vac to 300 psi
2" - Vac & Compound to 600 psi
2 1/2" - Vac & Compound to 5000 psi
3 1/2" - Vac & Compound to 600 psi
4 1/2" - Vac & Compound to 600 psi
All ranges are dual scale PSI & Bar/Kpa
See Range Availability Chart Below
- Accuracy:** ASME B40.1, Grade B. ±3-2-3%



986 Series	VAC	VAC / 15		VAC / 30		VAC / 60		VAC / 100		VAC / 160		VAC / 200		VAC / 300		15		30		60		100		160		200		300		400		600		1000		1500		2000		3000		5000				
1 1/2"	01L																X	X	X	X	X	X																								
1 1/2"	01B	X															X	X	X	X	X	X																								
2"	01L	X															X	X	X	X	X	X																								
2"	02L	X	X	X													X	X	X	X	X	X	X	X	X	X	X	X	X	X	X	X	X	X	X	X	X	X	X	X	X	X	X	X	X	
2"	01B	X		X	X	X	X										X	X	X	X	X	X																								
2"	02B	X		X													X	X	X	X	X	X																								
2 1/2"	02L	X		X	X	X											X	X	X	X	X	X	X	X	X	X	X	X	X	X	X	X	X	X	X	X	X	X	X	X	X	X	X	X	X	
2 1/2"	02B	X		X			X	X									X	X	X	X	X	X	X	X	X	X	X	X	X	X	X	X	X	X	X	X	X	X	X	X	X	X	X	X	X	X
3 1/2"	02L	X		X	X	X	X										X	X	X	X	X	X	X	X	X	X	X	X	X	X	X	X	X	X	X	X	X	X	X	X	X	X	X	X	X	X
4 1/2"	02L	X	X	X	X	X	X										X	X	X	X	X	X	X	X	X	X	X	X	X	X	X	X	X	X	X	X	X	X	X	X	X	X	X	X	X	X

Note: 3 1/2" & 4 1/2" supplied in 1/4" NPT Lower Mount Only



Dial Size	A	A1	B	B1	C	D	E
1 1/2"	1 11/16"	2 7/16"	1 1/16"	1 3/4"	1 5/8"	1/8" NPT	15/32"
2"	2 1/8"	2 15/16"	1 1/8"	2"	2 1/16"	1/8" & 1/4" NPT	9/16"
2 1/2"	2 1/2"	3 7/16"	1 1/8"	2"	2 15/32"	1/4" NPT	9/16"
3 1/2"	3 1/2"	4 3/8"	1 3/16"		3 7/16"	1/4" NPT	9/16"
4 1/2"	4 15/16"	6"	1 3/16"		4 7/8"	1/4" NPT	9/16"



Daughtridge Sales Company, Inc.

501 S Pine Street • PO Box 4364 • Rocky Mount NC 27803

Toll Free: 800-334-9720 • Fax: (252) 977-2192

(252) 977-1131 • www.dascosales.com

992 SERIES PRESSURE GAUGES

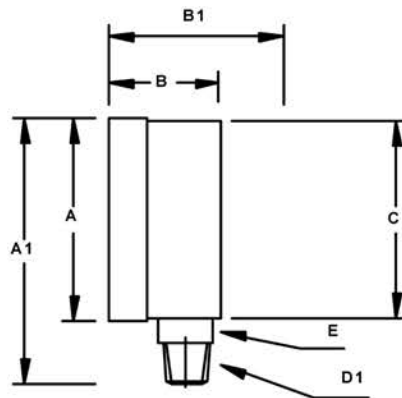
Ammonia Service

Specifications

Sizes: 2 1/2"
Case & Ring: Stainless Steel
Window: Glass
Dial: White with black scales
Pointer: Black aluminum
Mounting Connection: 1/4" NPT Lower only
Tube & Socket: Stainless Steel tube & Steel socket
Movement: Stainless Steel
Ranges: Agricultural: 0-60 psi, 0-150 psi & 0-400 psi
 Refrigerant: Vac/0/150 psi & Vac/0/300 psi
 (Compound ranges are dual scale psi & temp.)
Accuracy: ASME B40.1, Grade B. $\pm 3-2-3\%$



Size	Agricultural Ammonia Ranges		
	2 1/2"	0-60 psi	0-150 psi
	Refrigerant Ammonia Ranges		
2 1/2"	Vac/0/150 psi -60/85°F		Vac/0/300 psi -60/125° F



Gauge Size	A	A1	B	B1	C	D	D1	E
2 1/2"	2 1/2"	3 3/16"	1 1/8"	1 7/8"	2 7/16"	1/4" NPT	1/4" NPT	9/16"