



Diaphragm-Type Diaphragm Seal

Clamped Sanitary Diaphragm Seal

Type L990.57

Diaphragm Seals

Application

Food & Beverage and Pharmaceutical industry diaphragm seal to combine with Bourdon tube pressure gauges. Intended for hygienic pressure media.

Design

External, flush diaphragm for Cherry Burrell® connection, which requires hydraulic fluid to transmit pressure to instrument

Process Connection

1 1/2" to 3"

Instrument Connection

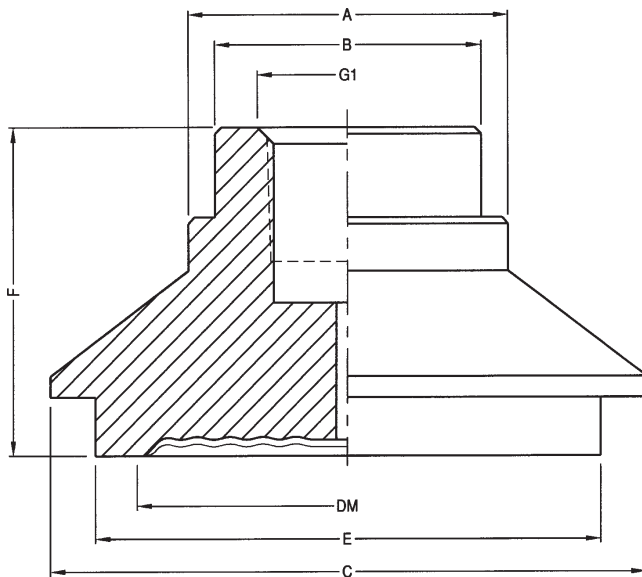
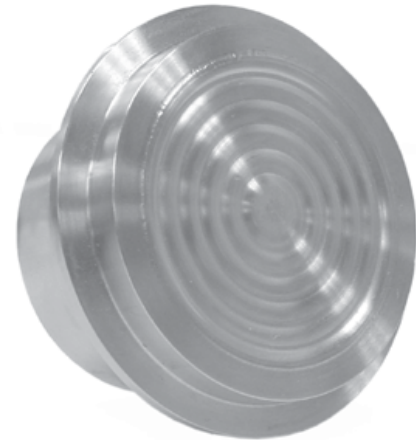
Capillary, 1/4" or 1/2" NPT-female

Suitable Pressure Ranges

15 PSI to 350PSI (up to 500PSI)

Available Options (connections, materials, etc.)

See Selection Guide (over)



DM=EFFECTIVE DIAPHRAGM DIAMETER
MWP=MAXIMUM WORKING PRESSURE @ 250°F,
HIGHER RATING WITH APPROPRIATE CLAMPING DEVICE
ALL DIMENSIONS IN INCHES UNLESS OTHERWISE NOTED

SIZE	MWP	A	B	C	DM	E	F	G1	WEIGHT
in	psi								lbs
1.5	500	1.42	1.18	2.00	1.3	1.74	1.38	1/4NPT OR 1/2NPT FEMALE	1.3
2	450		1.18	2.64	1.8	2.24	1.44		1.7
3	350		1.30	3.87	2.8	3.30	1.59		2.4

DWG.#2211998-5

To determine the effects of temperature and response time in a specific application, contact the factory for an **Application Questionnaire**. The information provided will allow WIKA Technical Support to accurately model your application parameters using state-of-the-art computer simulation techniques.

ACS L990.57
(ACS 99.08C)

Selection Guide - L990.57

L990.57,1/4X1.5,SS,SS,NONE

Options

NONE = No additional options
ELPOL = Electropolishing

Diaphragm Material

SS = 316L stainless steel
HC = Hastelloy® C-276

Upper Housing Material (See note 2)

SS = 316L stainless steel
HC = Hastelloy® C-276

Process Connection

1.5 = 1-1/2"
2.0 = 2"
2.5 = 2-1/2"
3.0 = 3"
4.0 = 4"

Instrument Connection

1/4 = 1/4" NPT female
1/2 = 1/2" NPT female
CPL = Capillary connection (To weld capillary directly to seal)

Diaphragm Seal Design (See note 1)

L990.57 = Cherry Burrell® I-Line

Notes

1. Maximum working pressure is based on clamp rating.
2. Upper housing is a process wetted component.

*Items in **bold** are available from stock (subject to prior sales). For optional items, consult factory for current lead-time.*

Options not listed may be available, please consult factory.
Fill Fluid & Mounting options: Please reference data sheet ACS 99.MO.

THE MEASURE OF
Total Performance™

Ordering Information:

State computer part number (if available) / type number / size / range / connection size and location / options required.

Specifications given in this price list represent the state of engineering at the time of printing. Modifications may take place and the specified materials may change without prior notice

05/01



WIKAI Instrument Corporation

1000 Wiegand Boulevard

Lawrenceville, Georgia 30043-5868

Tel: 770-513-8200 Fax: 770-338-5118

<http://www.wika.com> e-mail: chemseal@wika.com