



# Diaphragm-Type Chemical Seals

## Clamped Sanitary Chemical Seal

Type L990.22

### Chemical Seals

#### Application

Food & Beverage and Pharmaceutical industry chemical seal to combine with Bourdon tube pressure gauges. Intended for hygienic pressure media.

#### Design

External, flush diaphragm for Tri Clamp® connection, which requires hydraulic fluid to transmit pressure to instrument

#### Process Connection

1 1/2" to 4"

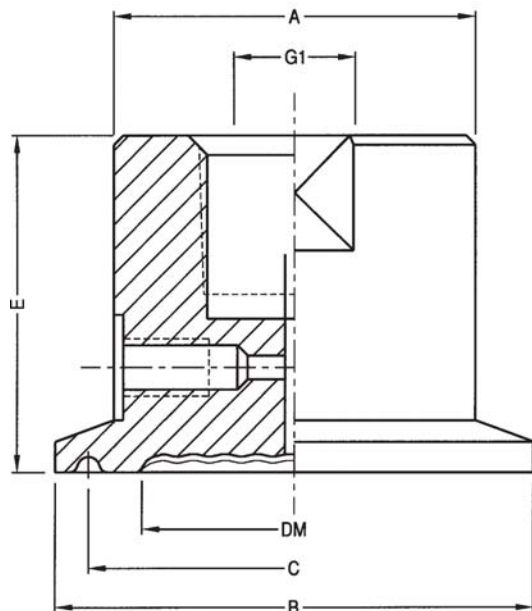
#### Instrument Connection

Capillary, 1/4" or 1/2" NPT-female

#### Suitable Pressure Ranges

15 PSI to 600PSI (clamping device dependent)

**Available Options** (connections, materials, etc.)  
See Selection Guide (over)



DM = EFFECTIVE DIAPHRAGM DIAMETER  
MWP = MAXIMUM WORKING PRESSURE @ 70°F  
(Ref. MHHS Clamp)  
PRESSURE RATING DEPENDENT ON CLAMPING DEVICE  
ALL DIMENSIONS IN INCHES UNLESS OTHERWISE NOTED

| SIZE | MWP | A    | B    | C    | DM  | E    | G1                               | WEIGHT |
|------|-----|------|------|------|-----|------|----------------------------------|--------|
| in   | psi |      |      |      |     |      |                                  | lbs    |
| 1.5  | 600 | 1.50 | 1.97 | 1.71 | 1.0 | 1.38 | 1/4NPT<br>OR<br>1/2NPT<br>FEMALE | 1.3    |
| 2    | 550 | 1.50 | 2.52 | 2.22 | 1.6 |      |                                  | 1.7    |
| 2.5  | 450 | 2.52 | 3.05 | 2.78 | 2.0 |      |                                  | 2.0    |
| 3    | 350 | 2.31 | 3.58 | 3.28 | 2.8 |      |                                  | 2.4    |
| 4    | 250 | 2.31 | 4.68 | 4.34 | 3.5 |      |                                  | 2.7    |

DWG.#2211980-5

To determine the effects of temperature and response time in a specific application, contact the factory for an **Application Questionnaire**. The information provided will allow WIKA Technical Support to accurately model your application parameters using state-of-the-art computer simulation techniques.

**ACS L990.22**  
(ACS 99.08C)

# Selection Guide - L990.22

L990.22,1/4X1.5,SS,SS,NONE

**Options**

**NONE = No additional options**  
 ELPOL = Electropolishing

**Diaphragm Material**

**SS = 316L stainless steel**  
 HC = Hastelloy® C-276

**Upper Housing Material (See note 2)**

**SS = 316L stainless steel**  
 HC = Hastelloy® C-276

**Process Connection**

**1.5 = 1-1/2"**  
**2.0 = 2"**  
**2.5 = 2-1/2"**  
 3.0 = 3"  
 4.0 = 4"

**Instrument Connection**

**1/4 = 1/4" NPT female**  
**1/2 = 1/2" NPT female**  
 CPL = Capillary connection (To weld capillary directly to seal)

**Diaphragm Seal Design (See note 1)**

L990.22 = Tri-Clamp®

**Notes**

1. Maximum working pressure is based on clamp rating.
2. Upper housing is a process wetted component.

*Items in **bold** are available from stock (subject to prior sales). For optional items, consult factory for current lead-time.*

Options not listed may be available, please consult factory.  
 Fill Fluid & Mounting options: Please reference data sheet ACS 99.MO.

THE MEASURE OF  
**Total Performance™**

**Ordering Information:**

State computer part number (if available) / type number / size / range / connection size and location / options required.

Specifications given in this price list represent the state of engineering at the time of printing. Modifications may take place and the specified materials may change without prior notice

02/06



**WIKAL Instrument Corporation**

1000 Wiegand Boulevard

Lawrenceville, Georgia 30043-5868

Tel: 770-513-8200 Fax: 770-338-5118

http://www.wika.com e-mail: chemseal@wika.com