



Nominal Ranges and Deadbands Pressure and Temperature Switches, L- and G-Series

PRESSURE/VACUUM SWITCHES												
Nominal Range ⁽¹⁾		Overpressure Ratings		Approximate Deadband ⁽²⁾ Switch Element (Buna-N Diaphragm)								
				LPA-GPA ⁽³⁾		LPS-GPS ⁽⁴⁾				LPD-GPD ⁽⁴⁾		
				Switch Element		J, H	G	J, H	K, F	P	GG	JJ, HH
Proof psi	Minimum Burst psi											
Vacuum												
-30 in.Hg	-760 mmHg	500	1000	6-24	2.5-4	4-6	1-2	1-2.5	3-5.5	4-6.5	1-2	1-2.5
Compound												
-30 in.Hg/ 15 psi	-760 mmHg/ 1.0 kg/cm ²	500	1000	6-24	2.5-4	4-6	1-2	1-2.5	3-5.5	4-6.5	1-2	1-2.5
			3-12	1-2.5	1-3.5	0.5-1.5	0.5-2	1.5-3.5	1.5-4	1-2	1-2	
Pressure												
30 in.H ₂ O	750 mmH ₂ O	20	35	4.0-27	1.5-3.5	2.0-4.0	0.5-1.0	0.7-2.0	2.1-4.9	2.8-5.6	0.7-1.4	0.7-2.8
60 in.H ₂ O	1500 mmH ₂ O	20	35	5.0-54	1.5-4.0	2.5-5.0	0.5-1.4	1.0-2.5	3-5.6	3.5-7.0	0.7-2.0	2-3.5
100 in.H ₂ O	2500 mmH ₂ O	20	35	8.5-90	2.0-5.5	4.0-8.5	1.0-2.0	1.4-3.0	4-7.7	5.6-11.7	1.4-2.8	2-4.2
150 in.H ₂ O	3750 mmH ₂ O	20	35	18-135	5.0-11	10-18	1.5-3.0	2.0-6.0	7.0-16	14-25.1	2.1-4.2	5-9.2
15 psi	1 kg/cm ²	500	1500	2.5-13	1.0-1.5	1.0-2.5	0.5-1.0	0.75-1.5	1.4-2.1	1.4-3.5	.7-1.4	1-1.4
30 psi	2 kg/cm ²	500	1500	3.0-27	1.0-2.8	1.0-3.2	.75-1.5	1-1.8	1.4-5	3-6	1-2.1	1.4-2.5
60 psi	4 kg/cm ²	500	1500	5.0-54	2.0-4.0	2.0-4.5	1.0-2.0	1.0-2.5	3-7	4-8	1.4-2.8	1.4-3.5
100 psi	7 kg/cm ²	1000	3000	10-90	3-6	5.0-10	1.0-2.5	1.4-3.2	7-12	7.0-14	1.4-3.5	3-7
200 psi	14 kg/cm ²	1000	3000	18-180	7-14	10-18	1.0-4.0	5.0-8.0	10-23	14-25	1.4-5.6	7.0-11.2
400 psi	28 kg/cm ²	2400	3000	45-360	16-30	16-45	4.0-8.0	5.0-15	22-42	22-63	5.6-11.2	7.0-21
600 psi	42 kg/cm ²	2400	3000	75-540	16-50	20-75	5.0-15	6.0-25	22-70	28-105	7.0-21	8.0-35
1000 psi ⁽¹⁰⁾	70 kg/cm ²	12000	14000	160-900	75-130	50-160	7.0-30	10-85	70-180	70-223	10-42	14-119
2000 psi	140 kg/cm ²	12000	14000	350-1800	150-200	150-350	20-50	25-110	209-279	209-488	28-70	35-154
3000 psi	210 kg/cm ²	12000	14000	400-2600	180-250	180-400	30-70	30-190	251-349	251-558	42-98	42-226

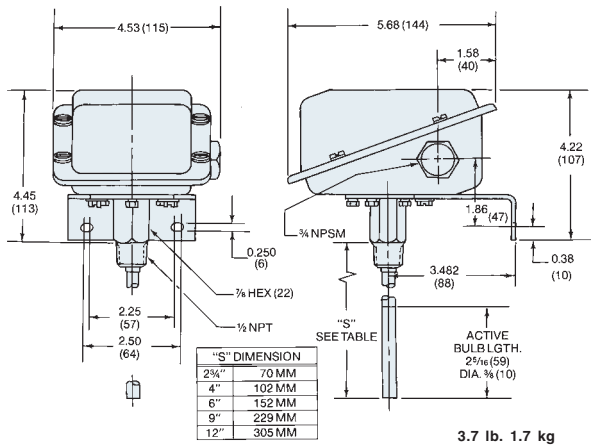
DIFFERENTIAL PRESSURE SWITCHES												
Nominal Range ⁽¹⁾		Overpressure Ratings		Approximate Deadband ^(2,7) Switch Element (Buna-N Diaphragm)								
				LDA-GDA ⁽³⁾		LDS-GDS ⁽⁴⁾				LDD-GDD ⁽⁴⁾		
				Switch Element		J, H	G	J, H	K, F	P	GG	JJ, HH
Static psi	Minimum Proof psi											
Pressure												
30 in.H ₂ O	750 mmH ₂ O	5.4	21.6	4.0-27	1.5-3.5	2.0-4.0	0.5-1.0	0.7-2.0	2.1-4.9	2.8-5.6	0.7-1.4	0.7-2.8
60 in.H ₂ O	1500 mmH ₂ O	5.4	21.6	5.0-54	1.5-4.0	2.5-5.0	0.5-1.4	1.0-2.5	2.5-6	3.5-7.0	0.7-2.0	2-3.5
100 in.H ₂ O	2500 mmH ₂ O	5.4	21.6	8.5-90	4.0-5.5	4.0-8.5	1.0-2.0	1.4-3.0	5.6-7.7	5.6-11.9	1.4-2.8	2-4.2
150 in.H ₂ O	3750 mmH ₂ O	5.4	21.6	18-135	5.0-11	10-18	1.5-3.0	2.0-6.0	7.0-15.4	14-25.2	2.1-4.2	2.8-8.4
30 psid	2 kg/cm ²	500	2000	3.0-27	1.0-2.5	1.0-3.0	1.0-1.5	1.0-1.8	2-5	3-6	1-2.1	1.4-2.4
60 psid	4 kg/cm ²	500	2000	5-54	2-4	2-4.5	1-2	1-2.5	3-7	4-8	1.4-2.8	1.4-3.5
200 psid	14 kg/cm ²	1000	4000	18-180	10-15	10-18	1.0-4.0	5.0-8.0	14-23	14-30	1.4-5.6	7.0-11.2
400 psid	28 kg/cm ²	1000	8000	45-360	16-30	16-45	4.0-8.0	5.0-15	22.4-42	22.4-36	5.6-11.2	7.0-21.0

TEMPERATURE RANGE SELECTION												
Adjustable Range		Max. Temp. °F	Approximate Deadband ⁽⁸⁾ Switch Element									
			LTA-GTA ⁽³⁾		LTS-GTS ⁽⁴⁾				LTD-GTD ⁽⁴⁾			
			Switch Element		J, H	G	J, H	K, F	P	GG	JJ, HH	KK, FF
°F	°C											
-40 to 60	-40 to 16	400	18-90	4.0-10	9.0-18	1.5-3	2-5	4-10	9.0-18	1.5-3	2-5	
0 to 100	-20 to 40	400	30-90	5.0-15	10-30	1.5-5.5	3-7	5-15	10-30	1.5-4.5	3-7	
75 to 205	20 to 95	400	34-120	6.0-18	10-34	3-5.5	3-8	6-18	10-34	3-5.5	3-8	
150 to 260	65 to 125	400	25-100	3-13	9.0-25	1.5-4	3-7	3-13	9.0-25	1.5-4	3-7	
235 to 375	110 to 190	500	35-130	6-19	10-35	2-5.5	3-8	6-17	10-35	2-5.5	3-8	
350 to 525 ⁽⁹⁾	175 to 275	700	40-165	5-27	15-40	3-7	3.5-11	5-27	15-40	3-7	3.5-11	
500 to 750 ⁽⁶⁾	260 to 400	900	50-200	20-36	5-10	6-21	20-36	20-36	36-60	5-10	6-21	

NOTES:

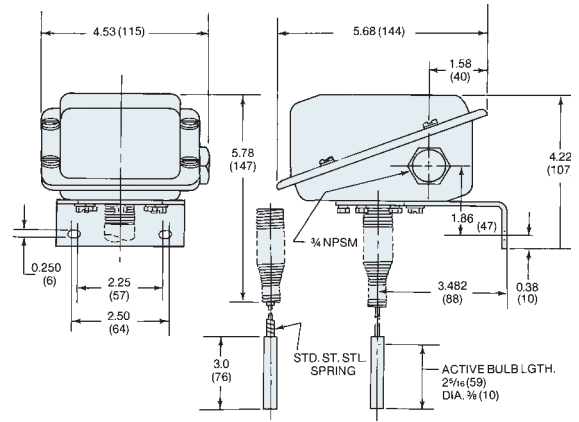
- Switches may generally be set between 15% and 100% of nominal range on increasing pressure. Consult factory for applications where setpoints must be lower.
- All deadbands are given in English units as shown in the nominal range column. Deadbands shown are for switches with Buna N diaphragm.
- Approximate deadbands for optional diaphragms:
 Viton: Multiply Buna N value by 1.4
 Teflon: Multiply Buna N value by 1.2
 Stainless Steel: Multiply Buna N value by 1.7
 Monel: Multiply Buna N value by 1.7
- Deadbands for LTA, LPA and LDA are adjustable between the values shown for all diaphragm materials.
- Deadbands for LPS, LPD, LDS, LDD, LTD, and LDS models are fixed within the range of values shown.
- Switches can be set at increase or decrease throughout the nominal range.
- Available with remote mount thermal system only.
- Deadbands given are for zero static working pressure.
- All deadbands given in °F.
- Not available with 2 3/4" stem.
- Proof pressure is 4000 psi with stainless steel and monel welded diaphragms.

Temperature Switch – Direct Mount



3.7 lb. 1.7 kg

Temperature Switch – Remote Mount



4.5 lb. 2.0 kg

Dimensions in () are millimeters