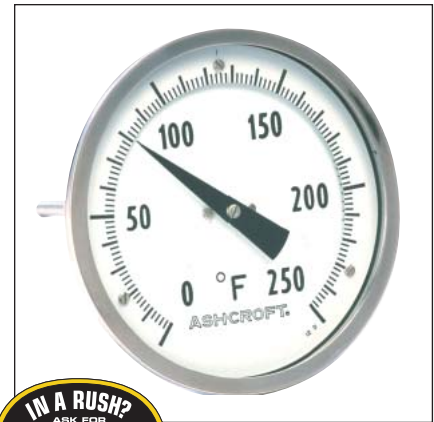


- Hermetically sealed
- External adjustment
- Maxivision® dial
- $\pm 1\%$ full-span accuracy (ASME B40.3 Grade A)
- All-welded stainless steel construction
- Silicone on the coil provides vibration dampening and superior time response
- Heavy-duty glass standard; plastic or shatterproof glass optional
- Limited five-year warranty

This series has a hermetic seal and an external adjustment in the rear of the case. As with other Ashcroft® industrial bimetal thermometers, it has a Maxivision® dial which eliminates parallax by placing the pointer on the same plane as the graduations. The connection locations are rear, lower, and Everyangle™.

The hermetic seal prevents entry of moisture into the casing, thus minimizing the possibility of icing or fogging inside the case. The window stays clear, and with the Maxivision dial, precise readings are certain.



SELECTION TABLE

Case Size		Style Code	Stem				Stem Lengths Available		Temperature Range											
Dial	Code		Connection	Code	Location	Code	"S" Length (inches)	Code	°F* Fahrenheit	°/Div.	Fig. Inter.	°C Celsius	°/Div.	Fig. Inter.						
2"	20	EI	Plain	40	Rear	R	2½	025	-80/120	2	20	-50/50	1	10						
			Pointed Plain	50	Rear	R			-20/120††			-20/120			2	20				
			¼ NPT	60	Rear	R			30/130††			0/50††			1	10	5			
3"	30		½ NPT Union	42	Everyangle	E	6	060	0/200	2	20	0/100	1	10						
			½ NPT	60					9			090			0/250	10/150	2	20		
			½ NPT	60	Rear	R	12	120	50/300			0/200			50	2			20	
					Lower	L	15	150	50/400											
			5"	50	½ NPT Union	42	Everyangle	E	18			180			50/550	5	50	50/450**†	5	50
					½ NPT	60									24			240		
½ NPT	60				Rear	R	10	100	100/800†	200/1000**††										
					Lower	L														

*Dual scale ranges available for all standard °F ranges (3" and 5" case only)

**Satisfactory for continuous service up to 800°F or 425°C. Can be used for intermittent service from 800 to 1000°F, or 425 to 500°C.

Use Ashcroft Duratemp thermometers for ranges above and below those listed above.

†Minimum stem length for these ranges is 4".

††Minimum stem length for lower connection and Everyangle is 4".

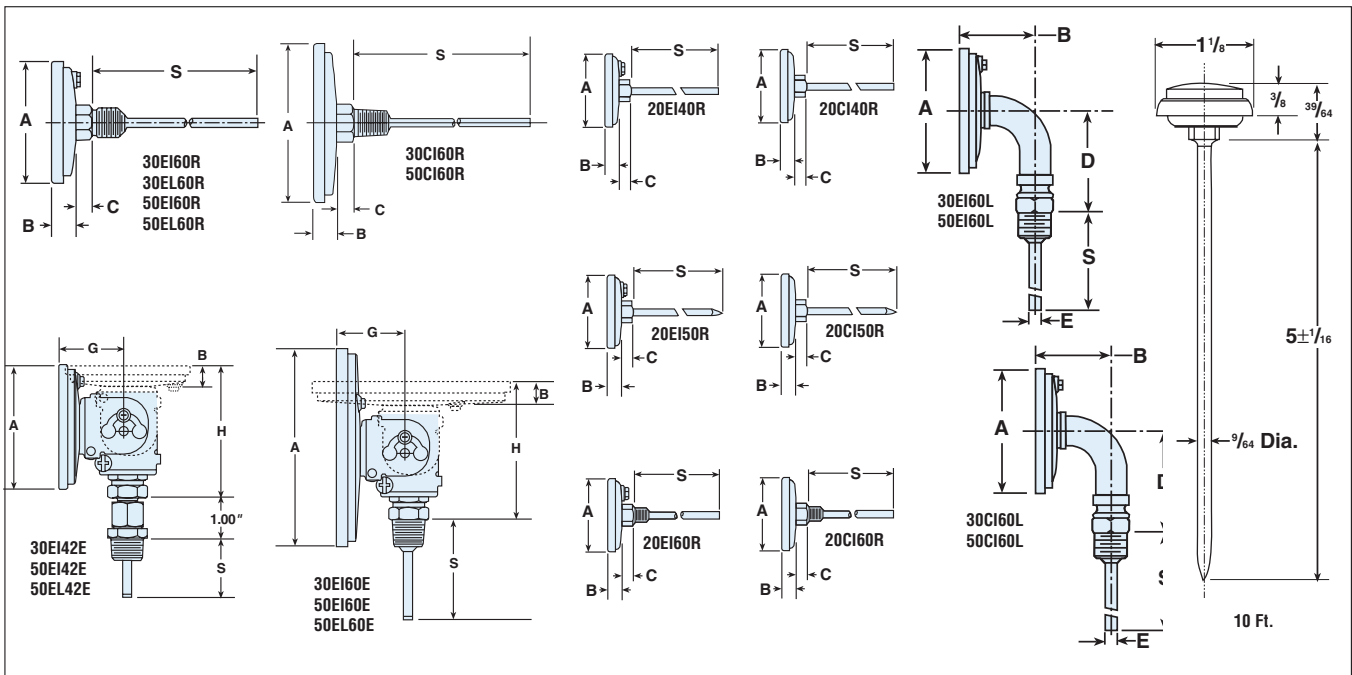
Thermowells must be used on all pressure or velocity applications, to protect the stem of thermometer from corrosion and physical damage, and to facilitate removal of the thermometer without disturbing the process. Maximum ambient temperature is 200°F (95°C).

Overtemperature Limits

Top of Range °F	Maximum Overtemperature
up to 250	100% of span
250/550	50% of span
550/1000	800°F **

TO ORDER THIS EI SERIES BIMETAL THERMOMETER:

- Select: 30 EI 60 R 040 0/250°F XNH
- Case Size: 3" Code 30
 - Style: Code EI
 - Stem Conn: ½ NPT Code 60
 - Stem Location: Rear Code R
 - Stem Length: 4" Code 040
 - Range: Code 0/250°F
 - Options: Stainless Steel Tag (see Page 198)



Case Series	Dial Size	Connection Location	A	B	C	D	E	G	H	S	NPT	Hex	Weight in ounces ³ S – 2½" Case Series		
													CI	EI	EL
CI, EI	2"	Rear (Plain)	2 ³ / ₃₂ (53)	3/8 (10)	5/16 (8)	–	–	–	–	– ²	–	1 ¹ / ₁₆	4½	4½	–
CI, EI	2"	Rear (Plain, pointed stem)	2 ³ / ₃₂ (53)	3/8 (10)	5/16 (8)	–	–	–	–	– ²	–	1 ¹ / ₁₆	4½	4½	–
CI, EI	2"	Rear (Threaded)	2 ³ / ₃₂ (53)	3/8 (10)	5/16 (8)	–	–	–	–	– ²	1/4	1 ¹ / ₁₆	4½	4½	–
CI, EI, EL	3"	Rear	3 ⁵ / ₃₂ (80)	1 ⁹ / ₃₂ (15)	5/16 (8)	–	–	–	–	– ²	1/2	7/8	7	7	8
CI, EI	3"	Lower	3 ⁵ / ₃₂ (80)	1 ²⁷ / ₃₂ (47)	–	2 ⁵ / ₈ (67)	1/4 (6)	–	–	– ²	1/2	7/8	11	11	–
EI	3"	Everyangle	3 ⁵ / ₃₂ (80)	1 ⁹ / ₃₂ (15)	–	–	–	1 ²¹ / ₃₂ (42)	3 ⁷ / ₁₆ (87)	– ²	1/2	7/8	–	10	–
CI, EI, EL	5"	Rear	5 ¹ / ₃₂ (128)	2 ³ / ₃₂ (18)	5/16 (8)	–	–	–	–	– ²	1/2	7/8	15	16	18
CI, EI	5"	Lower	5 ¹ / ₃₂ (128)	1 ¹⁵ / ₁₆ (49)	–	3 ⁵ / ₈ (92)	1/4 (6)	–	–	– ²	1/2	7/8	24	26	–
EI, EL	5"	Everyangle	5 ¹ / ₁₆ (128)	2 ³ / ₃₂ (18)	–	–	–	1 ⁷ / ₈ (48)	3 ⁹ / ₁₆ (91)	– ²	1/2	7/8	–	25	28

NOTES

- Figures in parenthesis () are in millimeters. All other dimensions are in inches.
- Standard "S" dimensions are 2½, 4, 6, 9, 12, 15, 18 and 24 inches.
Standard stem diameter is ¼ inch.
- Add 1 oz. for every 2 inches of stem length.