

- Recommended for use where clamped joints are not acceptable
- Assists in controlling plant emissions by helping prevent potential leakage of hazardous chemicals
- Prevents inadvertent disassembly
- All-stainless steel construction is standard. Other materials available



Type 400



Type 500

SELECTION TABLES

Table A – Process Connection/Type Number

Type No.	Process Connection	Process Connection Size/Code—Inches												Pressure Rating
		Size Code	¼	½	¾	1	1½	2	3	4	6	8		
400	Threaded—female NPT		•	•	•	•								4400 psi ⁽¹⁾⁽⁵⁾
401	Threaded—female NPT (with flushing connection)		•	•	•	•								4400 psi ⁽¹⁾⁽⁵⁾
402	Raised face flange			•	•	•	•	•	•					Per ASME B16.5 ⁽²⁾
403	Raised face flange (with flushing connection)			•	•	•	•	•	•					
500	Threaded—female NPT		•	•	•	•								500 psi
501	Threaded—female NPT (with flushing connection)		•	•	•	•								500 psi

Table B
Diaphragm Material

Material	Code
316L SS	S
Hastelloy B	G
Hastelloy C 22	J
Hastelloy C 276	H
Tantalum	U
Monel	P
Titanium	TI

Table C
Housing Materials⁽³⁾

Bottom Material	Code	Top Material ⁽⁴⁾
316L SS	SL	316L SS
Hastelloy B	G	316L SS
Hastelloy C 22	J	316L SS
Hastelloy C 276	H	316L SS
Monel	M	Monel
Titanium	TI	Titanium

Table D
Instrument Connection

Size – NPT	Code
¼	02T
½	04T

Table E – Filling Fluid

Filling	Service	Connection to Instrument	Temperature Range °F	Code
Glycerin	Pressure	Direct Only	0/400	CG
Silicone	Pressure/Vacuum	Direct or Flexible Line	-40/600	CK
Halocarbon	Pressure/Vacuum in presence of strong oxidizing agent	Direct or Flexible Line	-70/300	CF
Syltherm	Pressure/Vacuum	Direct or Flexible Line	-40/750	HA

NOTES:

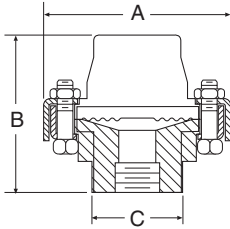
- (1) XHP (High Pressure Rings) with 9,000 psi rating available on Type 400 only.
- (2) Flange ratings 150 class through 1500 class.
- (3) Other bottom housing materials on application.
- (4) Top housing material is 316L SS (standard) except for monel which has a monel top housing and titanium which has a titanium top housing.
- (5) Continuous duty. For static pressures only between 2500 and 7500 psi.

TO ORDER THIS TYPE 400 & 500 DIAPHRAGM SEAL:

1. From Table A...select TYPE NUMBER & process connection size (e.g., 1" process—code 10-400)
2. From Table B...select DIAPHRAGM MATERIAL. (e.g., AISI 316L stainless steel—code S)
3. From Table C...select BOTTOM HOUSING MATERIAL. (e.g., AISI 316 stainless steel—code S)
4. From Table D...select INSTRUMENT CONNECTION size. (e.g., ¼ NPT—code 02T)
5. From Table E...select FILLING FLUID, if diaphragm seal will be attached to instrument. (e.g., Glycerin—code CG)

Coded order: 10-400SS-02T-CG

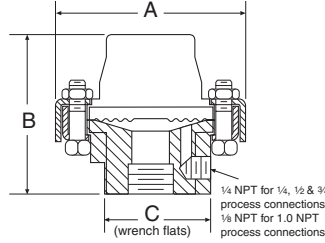
Types 400



Types 100, 200, 300, 400 –
Threaded 1/4, 1/2, 3/4, 1 NPT

A		B		C	
in	mm	in	mm	in	mm
3/4	(95)	2 7/8	(73)	1 13/16	(46)

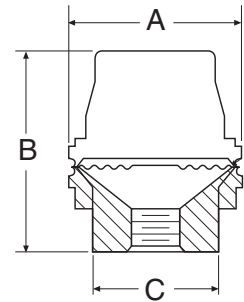
Types 401



Types 101, 201, 301, 401 –
Threaded 1/4, 1/2, 3/4, 1 NPT
with flushing connection

A		B		C	
in	mm	in	mm	in	mm
3/4	(95)	2 7/8	(73)	1 13/16	(46)

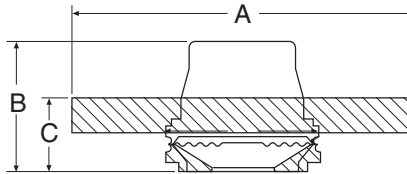
Type 500 All Welded



Type 500 All Welded – 1/4, 1/2, 3/4, 1 NPT

A		B		C	
in	mm	in	mm	in	mm
2 1/2"	(63)	2 7/8	(73)	1 13/16	(46)

Types 402, 403



Types 402, 403 Raised Face –
Flanged – 1", 1 1/2", 2"

Size	Flange Rating (#)	Type 402						Type 403					
		A		B		C		A		B		C	
		in	mm	in	mm	in	mm	in	mm	in	mm	in	mm
1"	150	4 1/4	(108)	2 1/8	(54)	1 3/16	(30)	4 1/4	(108)	2 7/8	(73)	1 15/16	(49)
	300 or 600	5	(127)			1 1/4	(32)	5	(127)			2	(51)
	900 or 1500	6	(152)			1 1/4	(32)	6	(152)			2	(51)
1 1/2"	150	5	(127)	2 7/16	(62)	2 7/16	(62)	5	(127)	2 15/16	(75)	1 7/8	(48)
	300 or 600	6 1/4	(159)			6 1/4	(159)	7	(178)				
	900 or 1500	7	(178)			7	(178)	7	(178)				
2"	150	6	(152)	2 15/32	(63)	2 15/32	(63)	6	(152)	2 15/16	(75)	2 3/16	(56)
	300 or 600	6 1/2	(165)			6 1/2	(165)	8 1/2	(216)				
	900 or 1500	8 1/2	(216)			8 1/2	(216)	8 1/2	(216)				