

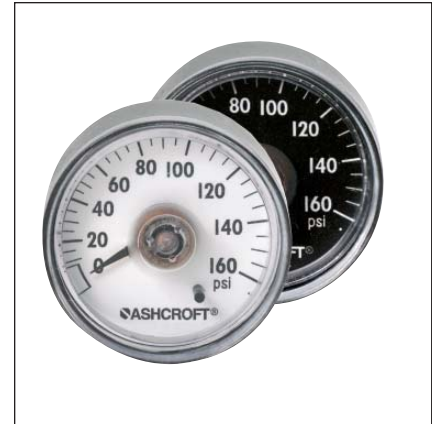
- **ASME Grade B ($\pm 3-2-3$) accuracy**
- **Excellent shock and corrosion resistance**
- **No gears to jam**
- **ABS case for lightweight gauge**
- **Smoother pointer rotation**
- **Cost effective**

Chalk up another Ashcroft® first. For the first time ever, ASME B40.1, Grade B accuracy ($\pm 3-2-3$) is available in a commercial grade direct drive gauge . . . only in Ashcroft direct drive gauges!

Ashcroft direct drive gauge technology provides excellent shock

resistance. Testing has shown these gauges to be four times more shock resistant than conventional fixed movement gauges! Direct drive gauges have no gears to jam or wear out. The net result is a gauge that arrives at your facility to specified calibration parameters and stays that way throughout the service life of the gauge.

Ashcroft direct drive gauges are lightweight, attractive and durable, plus the sealed construction makes this product appropriate for many harsh environmental conditions. This winning combination of features is only available in Ashcroft direct drive gauges.



GAUGE SPECIFICATIONS

Type no.:	DDG
Accuracy:	ASME B 40.1 Grade B ($\pm 3-2-3\%$ of span)
Size:	40mm (1½") or 50mm (2")
Case:	ABS/polycarbonate blend, black
Ring:	None
Window:	Polycarbonate, ultrasonically welded to case
Dial:	Plastic, black figures on white background
Pointer:	Brass, painted black
Bourdon tube:	Beryllium copper coil, silicone dampened
Movement:	None (direct reading)
Socket:	Integral plastic
Restrictor:	None
Connection:	½ NPT back connection (40mm & 50mm) ¼ NPT back connection (50mm only)

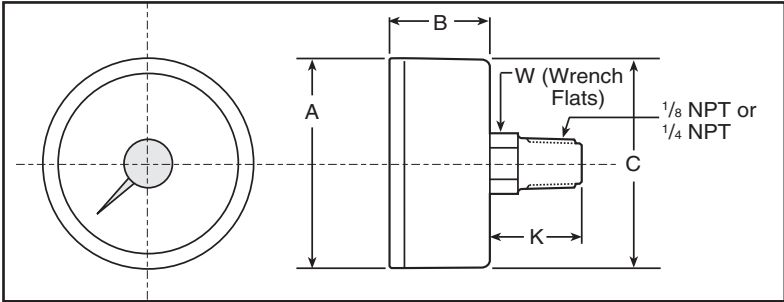
Ranges:	0/60 (180° arc), 0/100, 0/160, 0/200, 0/300 and 0/400 psi (235° arc)
Operating temperature:	-40°F to 150°F

GAUGE OPTIONS

Socket:	Brass socket (¼ NPT or ½ NPT)
Others:	<ul style="list-style-type: none"> • Custom dials • Throttle plugs • Special connections, on application • Red or white pointers • Bulk pack in returnable PVC trays

TO ORDER THIS TYPE 40 DDG/50 DDG GAUGE:

Select:	40	DDG	01B	P	100#
1. Gauge Size: 40mm _____	_____	_____	_____	_____	_____
2. Case Type: Direct Drive Gauge _____	_____	_____	_____	_____	_____
3. Connection Size/Location: ½ NPT back _____	_____	_____	_____	_____	_____
4. Socket Material: Plastic (P), Brass (H) _____	_____	_____	_____	_____	_____
5. Range: 0/100 psi _____	_____	_____	_____	_____	_____



Dial Size	A	B	C	K		W	
				1/8 NPT	1/4 NPT	1/8 NPT	1/4 NPT
1 1/2" (40mm)	1.63 (42)	.71 (18)	1.63 (42)	.65 (17)	.90* (23)	.44 (11)	.56* (14)
2" (50mm)	2.15 (54)	.71 (18)	2.15 (54)	.65 (17)	.90 (23)	.44 (11)	.56 (14)

* Brass socket only