

- 4½" through 12" dials
- Stainless steel, phenolic and aluminum case materials
- Dual-scale dials with pressure and temperature indication
- Wide range of refrigerant scales, including refrigerant 134A and ammonia

Ashcroft® refrigeration and ammonia gauges are used to display pressure and temperature when measuring various sealed refrigeration systems. This dual-scale dial gauge has an inner pressure scale with black numerals and an outer temperature scale with red numerals. A selection of models exists to meet specification and price parameters.



Type 1017 Case Style Shown

SPECIFICATIONS										
Gauge Type Number	Refrigerant	Dial Size (Inches)	Case & Ring Material	Bourdon Tube, Tip & Socket Material	Tube & Socket Code	Range	Pointer	Movement	NPT Connection	
1017A	XR1	R-11	Aluminum, Black Epoxy Coated	Phosphor Bronze Tube, Brass Tip, Brass Socket (all joints silver brazed)	A	30 inH Vac/150 psi or 30 inHg Vac/300 psi	Black Adjustable	Stainless Steel with Teflon coated pinion and segment shaft, rotary geared	1/4 (1/2 optional)	
	XR2	R-12								
XR3	R-22									
XR4	R-502									
XR6	R-114									
XR7	R-500									
XR8	R-134A									
XR9	R-123									
1017S	XR5	Ammonia		316 stainless steel (all joints TIG welded)	S					

STANDARD METRIC RANGES							
RANGE		DIAL GRADUATIONS		RANGE	DIAL GRADUATIONS		
kg/cm ²	bar	Figure Interval	Minor Graduation	kPa (kilopascal)	Figure Interval	Minor Graduation	
-1/9	-1/9	1	0.1	-100/900	100	10	
-1/24	-1/24	2	0.2	-100/2400	500	20	

MOUNTING				
Gauge Type Number	Dial Size ⁽¹⁾ (Inches)	Connection Location	Mounting	Method
1017	4½", 6"	Back	Flush	-

STANDARD RANGES				
Range	Figure Interval		Minor Graduation	
	Inches Mercury	psi	Inches Mercury	psi
30"HgVac/150 psi	10	25	2	5
30"HgVac/300 psi	30	25	5	5

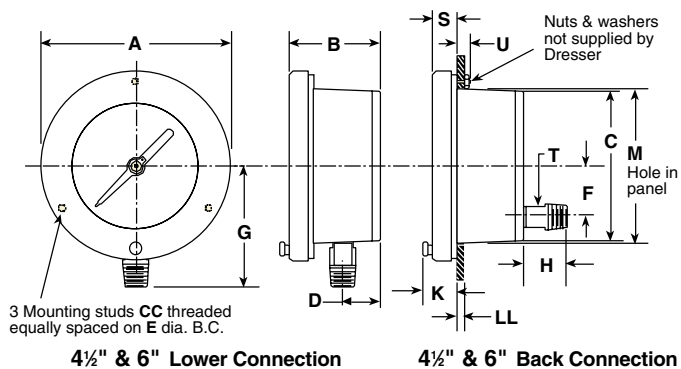
TO ORDER THESE REFRIGERATION GAUGES:

Select: 45 1017 A 02L XR5 30 in. Hg Vac/150#

- Dial size—4½", 6" _____
- Case Type—1017 _____
- Tube and socket material—A, S _____
- Connection size—¼ (02), ½ (04) _____
- Connection location—Lower (L), Back (B) _____
- Optional features including refrigerant (see page 176) _____
- Standard pressure range—30"HgVac/150 psi _____

Accessories—see pages 233-238

Case Type 1017



Dial Size Inches	A	B	C	D	E	F	G	H	Weight (lbs)
4½	6 ³ / ₃₂ (148)				5 ³ / ₈ (137)		3 ¹⁵ / ₁₆ (100)		2½
6	7 ⁷ / ₁₆ (192)	2 ⁷ / ₈ (73)	4 ³ / ₄ (121)	1 ¹ / ₁₆ (27)	7 (178)	1 ⁵ / ₈ (41)	4½ (114)	1 ³ / ₈ (35)	3

Dial Size Inches	K	M	P	S	T	U	CC	LL	Weight (lbs)
4½		4 ⁷ / ₈ (124)					#10-24		2½
6	1 ¹ / ₁₆ (27)	6½ (165)	2 ¹ / ₈ (54)	5 ⁸ / ₁₆ (16)	5 ⁸ / ₁₆ (16)	3 ⁴ / ₁₆ (19)	¼-20	1 ⁸ / ₁₆ -1 ² / ₁₆ (3)(13)	3